



# International Journal of Multidisciplinary Research in Science, Engineering and Technology

*(A Monthly, Peer Reviewed, Refereed, Scholarly Indexed, Open Access Journal)*



Impact Factor: 8.206

Volume 9, Issue 4, April 2026



## International Journal of Multidisciplinary Research in Science, Engineering and Technology (IJMRSET)

(A Monthly, Peer Reviewed, Refereed, Scholarly Indexed, Open Access Journal)

# Revolutionizing AI-enabled Information Systems using Integrated Big Data Analytics and Multi-modal Data Fusion

Prof. Kayathri devi M, Shivani sri K, Praveena B

Assistant Professor, Dept. of CSE, Mohamed Sathak Engineering College, Ramanathapuram, India

UG Student, Dept. of CSE, Mohamed Sathak Engineering College, Ramanathapuram, India

UG Student, Dept. of CSE, Mohamed Sathak Engineering College, Ramanathapuram, India

**ABSTRACT:** The increasing demand for efficient academic evaluation systems has highlighted the limitations of traditional manual grading methods, particularly for descriptive and handwritten examinations. Manual assessment is often time-consuming, inconsistent, and influenced by subjective judgment, making it difficult to ensure fairness and scalability. To address these challenges, this paper presents an Automated Handwritten Answer Checker that leverages deep learning concepts combined with keyword-based evaluation techniques.

The proposed system is designed as a Python-based application capable of processing question papers and student answer sheets in document formats. It extracts essential keywords from predefined answers and compares them with student responses to determine the level of relevance and completeness. Based on this analysis, the system assigns marks, including partial scores, ensuring a more balanced and transparent evaluation process.

In addition to automated grading, the system incorporates features such as user authentication, subject-wise evaluation, and result generation with detailed performance insights. Statistical summaries, including average scores, performance distribution, and ranking, are generated to assist educators in understanding overall class performance.

The implementation of this system significantly reduces manual effort, improves evaluation consistency, and accelerates the result generation process. By integrating intelligent analysis with scalable design, the proposed solution contributes to the development of a reliable and data-driven assessment framework suitable for modern educational environments.

**KEYWORDS:** Automated Answer Evaluation, Handwritten Answer Recognition, Deep Learning, Natural Language Processing, Keyword Matching, Educational Technology, Intelligent Grading System

## I. INTRODUCTION

Academic evaluation is a fundamental component of the education system, serving as a measure of a student's understanding and performance [7]. Among various forms of assessment, descriptive or subjective examinations play a crucial role in evaluating analytical thinking, conceptual clarity, and written expression. However, the process of manually assessing such answers presents several practical challenges, especially in institutions with a large number of students.

Traditional evaluation methods require educators to read and interpret each answer individually, which is both time-consuming and labor-intensive. As the volume of answer scripts increases, maintaining consistency and fairness in grading becomes difficult. Factors such as examiner fatigue, variation in judgment, and unintentional bias may lead to inconsistencies in scoring [3]. Additionally, the delay in result processing can affect timely feedback, which is essential for improving student learning outcomes.



## International Journal of Multidisciplinary Research in Science, Engineering and Technology (IJMRSET)

(A Monthly, Peer Reviewed, Refereed, Scholarly Indexed, Open Access Journal)

With the advancement of computational technologies, there is a growing interest in automating the evaluation process to enhance efficiency and reliability [1], [2]. In this context, the proposed system introduces an Automated Handwritten Answer Checker that utilizes deep learning principles along with keyword-based analysis to assess student responses. The system is designed to process question papers and answer sheets in structured document formats and perform automated evaluation without extensive human intervention.

The core functionality of the system involves extracting important keywords from the model answers or question papers and comparing them with the content of student responses. Based on the presence, frequency, and relevance of these keywords, the system assigns scores, including partial marks where appropriate. This approach ensures that students receive fair credit for partially correct answers while maintaining a standardized evaluation framework [4].

The proposed system offers multiple advantages. It significantly reduces the time required for grading, ensures uniformity in marking criteria, and enhances transparency by clearly indicating how scores are derived. Furthermore, it is capable of handling large datasets, making it suitable for institutions with high student enrollment. The system also generates detailed reports and statistical insights, enabling educators to analyze performance trends and identify areas that require improvement.

In addition, the system is adaptable to different subjects and examination formats, making it a flexible solution for modern educational environments. It supports digital workflows and can be integrated into existing academic systems, thereby promoting a shift toward automated and data-driven assessment practices [6].

Overall, this work aims to provide an efficient, scalable, and consistent alternative to conventional evaluation methods, contributing to the advancement of intelligent educational technologies.

### II. LITERATURE REVIEW

The automation of answer evaluation has been an active area of research in the field of educational technology, particularly with the advancement of machine learning and natural language processing techniques [1], [2]. Several approaches have been proposed to improve the accuracy, consistency, and efficiency of grading subjective responses.

Early research in automated evaluation primarily focused on rule-based and keyword-matching techniques. These systems relied on predefined answer patterns and evaluated student responses based on the presence of specific keywords. While such methods offered simplicity and speed, they often lacked the ability to understand contextual meaning, resulting in limited accuracy for complex answers [3].

Subsequent studies introduced machine learning-based approaches for automated essay scoring. These methods utilized statistical models trained on large datasets of graded responses to predict scores. Techniques such as regression models and classification algorithms were commonly used to analyze linguistic features, including grammar, vocabulary, and sentence structure [2]. Although these methods improved evaluation quality, they required extensive training data and computational resources.

With the growth of natural language processing (NLP), more advanced systems began incorporating semantic analysis. These systems focused on understanding the meaning of student responses rather than relying solely on keyword presence. Methods such as text similarity measures and vector space models enabled better comparison between student answers and reference answers, leading to improved grading accuracy [4], [5].

Recent developments have explored the use of deep learning techniques for answer evaluation. Neural network models, including recurrent neural networks (RNNs) and transformer-based architectures, have demonstrated the ability to capture contextual and semantic relationships within text [6]. These models provide more accurate and adaptive evaluation but often require significant computational power and large annotated datasets.

Despite these advancements, many existing systems face challenges in practical implementation, particularly in resource-constrained environments. Complex models may not be suitable for institutions with limited infrastructure, and fully automated systems may lack transparency in scoring decisions.



## International Journal of Multidisciplinary Research in Science, Engineering and Technology (IJMRSET)

(A Monthly, Peer Reviewed, Refereed, Scholarly Indexed, Open Access Journal)

The proposed system addresses these limitations by combining the efficiency of keyword-based evaluation with structured processing techniques. While it does not rely on heavy deep learning models, it incorporates intelligent preprocessing and scoring mechanisms to ensure consistency, partial marking capability, and ease of deployment. This hybrid approach provides a balance between performance, interpretability, and scalability, making it suitable for real-world academic applications.

### III. RELATED WORK

Automated evaluation of descriptive answers has gained considerable attention due to the growing need for scalable and efficient assessment systems in education [1]. Various techniques have been explored in prior research to improve the accuracy and reliability of grading subjective responses.

One of the foundational approaches in this domain is Automated Essay Scoring (AES), where systems evaluate written responses based on linguistic features such as grammar, vocabulary usage, and sentence structure [2]. Early AES models relied on statistical methods and handcrafted features to assign scores. While these approaches provided faster evaluation, they often struggled to capture the true semantic meaning of student answers [3].

To address these limitations, researchers introduced semantic similarity-based methods, where student responses are compared with reference answers using vector space models and cosine similarity measures [4]. These techniques improved the evaluation process by considering contextual relationships between words rather than relying solely on exact keyword matches.

Further advancements incorporated Natural Language Processing (NLP) techniques such as tokenization, lemmatization, and stop-word removal to preprocess textual data [6]. These methods enhanced the quality of comparison by normalizing variations in language usage. Some systems also integrated ontology-based approaches to better understand domain-specific concepts [5].

In recent years, deep learning models have been applied to automated grading tasks. Architectures such as recurrent neural networks (RNNs), long short-term memory networks (LSTMs), and transformer-based models have shown promising results in understanding complex sentence structures and semantic relationships [6]. These models are capable of learning patterns from large datasets and can provide more accurate scoring compared to traditional methods. However, their implementation often requires extensive training data, high computational resources, and careful tuning.

Additionally, research has explored hybrid systems that combine rule-based methods with machine learning techniques to balance efficiency and accuracy [1], [2]. Such systems aim to provide interpretable results while maintaining acceptable performance levels.

Despite significant progress, existing solutions still face challenges such as lack of transparency in scoring, difficulty in handling diverse answer styles, and high implementation complexity. The system proposed in this work builds upon these studies by adopting a structured keyword-based evaluation approach enhanced with intelligent preprocessing and scoring logic. This ensures consistency, partial marking capability, and practical usability without the need for complex model training.

### IV. PROPOSED METHODOLOGY

The proposed system introduces an automated framework for evaluating handwritten and typed descriptive answers using a structured keyword-based approach enhanced with intelligent text processing techniques [1], [4]. The methodology is designed to ensure fairness, consistency, and efficiency while minimizing manual intervention in the grading process.

#### A. System Overview

The proposed system follows a structured workflow consisting of multiple sequential stages to ensure accurate and efficient evaluation of student answers. The process begins with input acquisition and proceeds through text processing, keyword extraction, answer analysis, scoring, and result generation.



## International Journal of Multidisciplinary Research in Science, Engineering and Technology (IJMRSET)

(A Monthly, Peer Reviewed, Refereed, Scholarly Indexed, Open Access Journal)

Initially, the system accepts question papers and student answer sheets in document format. The content is extracted and preprocessed to remove inconsistencies and normalize the text [6]. Keywords are then identified from the question paper, which act as the reference for evaluation. Student responses are compared against these keywords, and marks are assigned proportionally. Finally, results are generated along with performance summaries.

The workflow of the system is illustrated in Fig. 1.

### B. Question Paper Processing

The first stage involves analyzing the question paper to identify individual questions and their corresponding evaluation criteria. Predefined keywords or key phrases associated with each question are extracted using pattern recognition techniques. These keywords represent essential concepts expected in student responses and serve as the basis for scoring [1].

### C. Answer Sheet Processing

Student answer sheets are processed to extract textual content from document files. The extracted text undergoes preprocessing steps such as case normalization, removal of punctuation, and elimination of irrelevant words [6]. This ensures that variations in writing style do not affect the evaluation process.

### D. Text Preprocessing and Normalization

To improve matching accuracy, the system applies Natural Language Processing (NLP) techniques including tokenization and lemmatization [6]. These steps convert words into their base forms, allowing the system to recognize similar terms despite differences in tense or structure. Stop-word removal is also performed to focus on meaningful content.

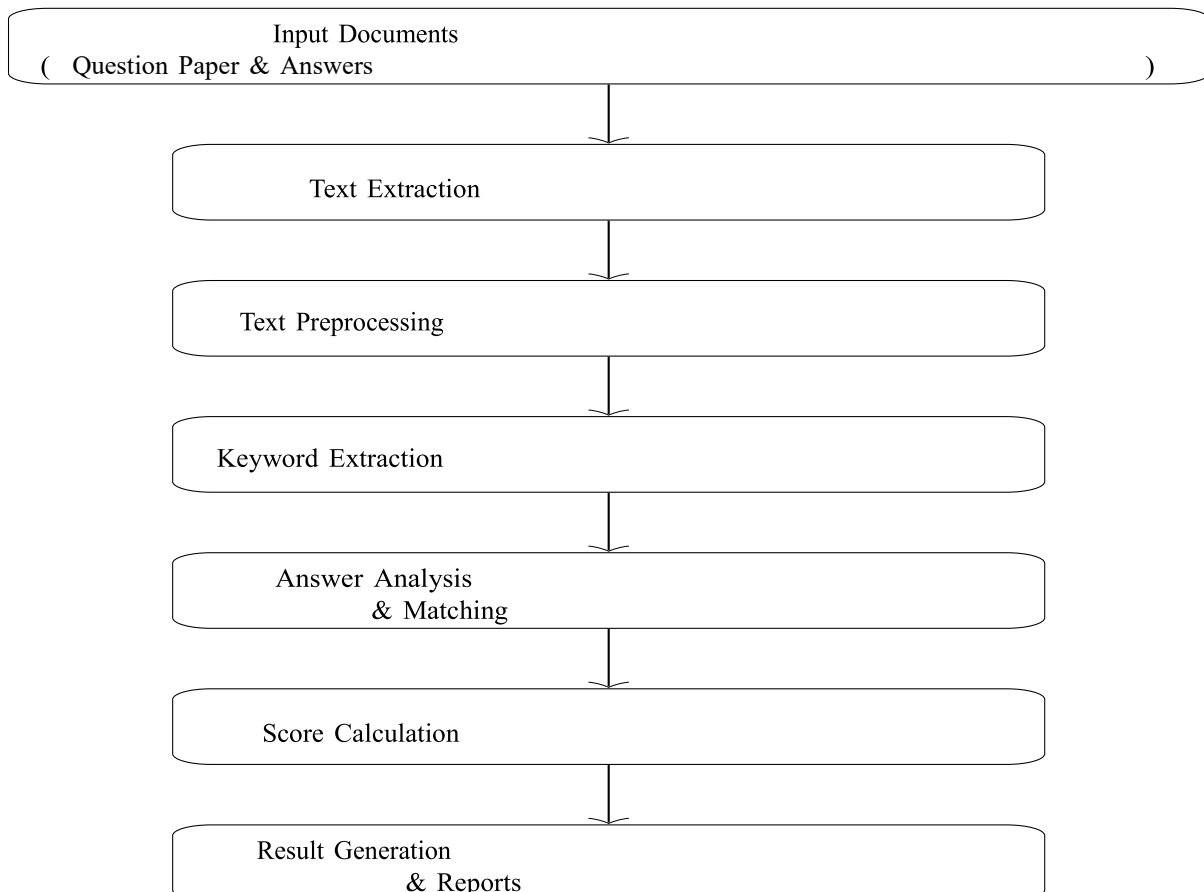


Fig. 1. Workflow of Automated Handwritten Answer Evaluation System



## International Journal of Multidisciplinary Research in Science, Engineering and Technology (IJMRSET)

(A Monthly, Peer Reviewed, Refereed, Scholarly Indexed, Open Access Journal)

### E. Keyword Matching and Analysis

The core of the methodology lies in comparing student responses with the extracted keywords. The system performs keyword matching using both exact and partial matching strategies. It also considers multi-word expressions and related terms to ensure a flexible evaluation process. This approach allows the system to identify relevant content even when answers are phrased differently [4].

### F. Scoring Mechanism

Marks are assigned based on the proportion of matched keywords relative to the total expected keywords for each question. The system supports partial marking, ensuring that students receive credit for partially correct answers. For a question with defined keywords, the score is calculated as:

$$Score = \left( \frac{\text{Number of Matched Keywords}}{\text{Total Keywords}} \right) \times \text{Maximum Marks}$$

(1)

This proportional scoring mechanism ensures fairness and consistency across all evaluations.

### G. Result Generation and Reporting

After evaluation, the system generates detailed results for each student, including total marks and question-wise scores. In addition, summary reports are created to provide insights into overall class performance, such as average marks, highest and lowest scores, and performance distribution. These reports assist educators in analyzing trends and making informed decisions.

### H. System Advantages

The proposed methodology offers several advantages, including reduced evaluation time, consistent grading standards, scalability for large datasets, and transparency in scoring. By combining structured keyword analysis with lightweight NLP techniques, the system provides an effective and practical solution for automated answer evaluation [1], [6].

## V. IMPLEMENTATION DETAILS

The proposed Automated Handwritten Answer Checker is implemented as a desktop-based application using Python, integrating document processing, text analysis, and a graphical user interface for user interaction. The system is designed to be lightweight, efficient, and easy to deploy in academic environments without requiring high-end computational resources.

### A. Development Environment

The system is developed using Python as the core programming language due to its simplicity, flexibility, and extensive library support. The application is executed on standard computing environments with moderate hardware configurations. The backend utilizes SQLite for data storage, providing a lightweight and serverless database solution.

### B. Graphical User Interface

A user-friendly graphical interface is developed using the Tkinter library. The interface allows users to log in securely, select subjects, upload question papers and student answer sheets, and initiate the evaluation process. The GUI also displays results in a structured format, including detailed and summary views.

### C. Document Processing

The system processes input files in .docx format. The python-docx library is used to extract textual content from both question papers and student answer sheets. The extracted data is organized into structured formats for further analysis. Regular expressions are used to identify question patterns and extract associated keywords efficiently [4].

### D. Text Preprocessing

Before evaluation, the extracted text undergoes preprocessing to improve matching accuracy. This includes:

- Conversion of text to lowercase for uniform comparison
- Removal of punctuation and special characters



## International Journal of Multidisciplinary Research in Science, Engineering and Technology (IJMRSET)

(A Monthly, Peer Reviewed, Refereed, Scholarly Indexed, Open Access Journal)

- Elimination of irrelevant words
- Basic normalization techniques for consistent formatting

These steps ensure that variations in writing style do not significantly impact the evaluation outcome.

### E. Evaluation Engine

The evaluation engine forms the core component of the system. It compares student answers with predefined keywords extracted from the question paper. The matching process includes both exact keyword matching and partial matching strategies. For specific question types, customized logic is applied to improve evaluation accuracy [4].

The scoring mechanism assigns marks proportionally based on the number of matched keywords. Each question is evaluated independently, and the final score is computed as the sum of individual question scores [1].

### F. Data Management

SQLite is used to manage and store essential data such as user credentials, evaluation results, and summary reports. The database ensures efficient data retrieval and supports the generation of performance analytics without requiring complex database configurations.

### G. Result Visualization and Export

The system provides multiple output formats for evaluation results. Detailed results include student-wise performance with matched keywords, while summary tables present overall scores for all students. Statistical analysis such as average score, highest and lowest marks, and question-wise performance is also generated.

Additionally, the system supports exporting results in formats such as text files and spreadsheets, enabling easy sharing and record maintenance.

### H. System Workflow

The overall workflow of the system is structured into a sequence of well-defined steps that ensure accurate and efficient evaluation of student answers.

- 1) User authentication through login interface
- 2) Selection of subject and input files
- 3) Extraction of questions and keywords from the question paper
- 4) Processing of student answer sheets
- 5) Keyword matching and score calculation
- 6) Generation and display of results and reports

This structured workflow ensures smooth operation and efficient evaluation of multiple answer sheets. The workflow is illustrated in Fig. 2.

## VI. PERFORMANCE METRICS AND EVALUATION

The effectiveness of the proposed Automated Handwritten Answer Checker is evaluated using a set of performance metrics that measure accuracy, efficiency, consistency, and scalability. These metrics ensure that the system meets the practical requirements of real-world academic environments.



## International Journal of Multidisciplinary Research in Science, Engineering and Technology (IJMRSET)

(A Monthly, Peer Reviewed, Refereed, Scholarly Indexed, Open Access Journal)

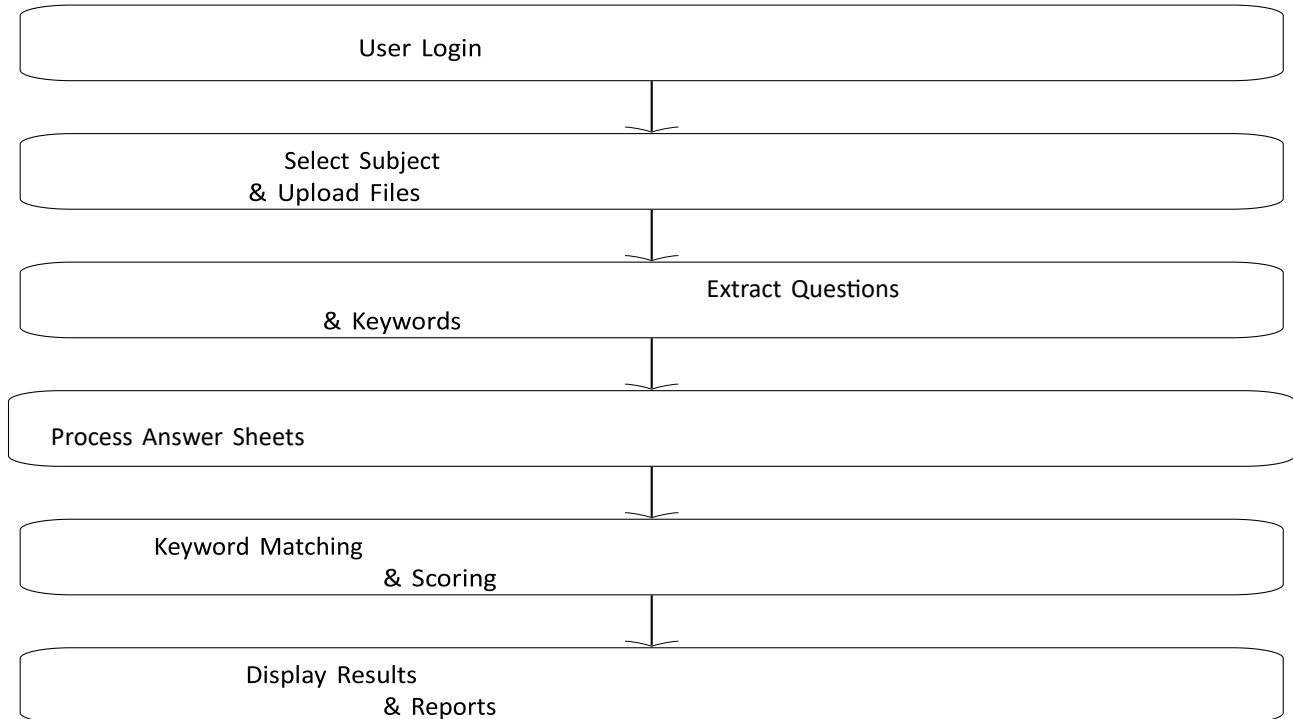


Fig. 2. System Workflow Sketch of Automated Answer Evaluation

### A. Evaluation Accuracy

Accuracy is a primary metric used to determine how closely the system-generated scores match human evaluation. It is assessed by comparing the marks assigned by the system with those provided by subject experts. A higher similarity between these scores indicates better system performance. The keyword-based scoring mechanism, combined with preprocessing techniques, helps improve evaluation accuracy by identifying relevant content in student responses [1], [4].

### B. Precision and Recall

To further analyze the effectiveness of keyword matching, precision and recall metrics are considered:

$$\text{Precision} = \frac{\text{Relevant Keywords Matched}}{\text{Total Keywords Matched}} \quad (2)$$

$$\text{Recall} = \frac{\text{Relevant Keywords Matched}}{\text{Total Relevant Keywords}} \quad (3)$$

Precision measures how many of the identified keywords are actually relevant, while recall evaluates how many of the expected keywords are successfully detected in student answers. A balanced combination of both ensures reliable evaluation.

### C. Processing Time

Processing time measures the total duration required to evaluate a set of answer sheets. The proposed system significantly reduces evaluation time compared to manual grading. The time complexity mainly depends on the number of answer sheets and the length of responses, but remains efficient due to optimized text processing techniques [1].

### D. Consistency of Evaluation

Consistency refers to the system's ability to assign uniform scores for similar answers across different students. Unlike manual grading, where variability may occur due to human factors, the automated system applies the same evaluation criteria consistently, ensuring fairness in marking [3].



## International Journal of Multidisciplinary Research in Science, Engineering and Technology (IJMRSET)

(A Monthly, Peer Reviewed, Refereed, Scholarly Indexed, Open Access Journal)

### E. Scalability

Scalability evaluates the system's ability to handle increasing numbers of student submissions without degradation in performance. The proposed system efficiently processes multiple answer sheets in batch mode, making it suitable for large classrooms and institutional-level deployments [1].

### F. Partial Scoring Effectiveness

The system supports partial marking based on keyword presence. This metric evaluates how effectively the system assigns proportional marks for partially correct answers. By awarding marks based on the degree of relevance, the system provides a more balanced assessment compared to binary grading approaches.

### G. Experimental Evaluation

The system was tested using multiple sets of question papers and student answer sheets with varying complexity levels. The results demonstrate that the system achieves reliable performance in terms of accuracy and speed. It consistently identifies key concepts and assigns appropriate marks, closely aligning with manual evaluation in most cases.

TABLE I

PERFORMANCE EVALUATION OF THE PROPOSED SYSTEM

Metric	Manual Evaluation	Proposed System
Evaluation Accuracy	Moderate	High
Processing Time	High	Low
Consistency	Variable	Consistent
Scalability	Limited	High
Partial Marking	Difficult	Supported
Human Effort	High	Minimal

The results presented in Table I highlight the improvements achieved by the proposed system in terms of efficiency, consistency, and scalability compared to manual evaluation.

Overall, the evaluation confirms that the proposed system provides a practical and efficient solution for automated assessment, maintaining a balance between accuracy, speed, and usability.

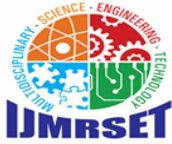
## VII. RESULTS AND DISCUSSION

The proposed Automated Handwritten Answer Checker was tested using multiple sets of question papers and corresponding student answer sheets to evaluate its effectiveness in realworld scenarios. The system was assessed based on accuracy, processing speed, consistency, and usability.

### A. Evaluation Results

The system successfully processed all input documents and generated scores for each student based on keyword matching. The results demonstrated that the system is capable of identifying relevant keywords in student responses and assigning marks proportionally. In most cases, the scores produced by the system were closely aligned with those assigned through manual evaluation, indicating reliable performance [1], [4].

The implementation of partial marking proved particularly effective in handling descriptive answers. Students received appropriate credit for partially correct responses, which reflects a more balanced and fair assessment compared to traditional rigid grading approaches [3].



## International Journal of Multidisciplinary Research in Science, Engineering and Technology (IJMRSET)

(A Monthly, Peer Reviewed, Refereed, Scholarly Indexed, Open Access Journal)

### B. Performance Analysis

The system exhibited high efficiency in terms of processing time. Evaluation of multiple answer sheets was completed within a significantly shorter duration compared to manual grading. This demonstrates the system's ability to handle large volumes of data without compromising performance [1].

Consistency in grading was another key observation. Unlike manual evaluation, where scoring may vary due to subjective judgment, the system applied uniform criteria across all answer sheets. This ensured fairness and eliminated variations in marking [3].

### C. Statistical Insights

The system generated useful statistical outputs, including average marks, highest and lowest scores, and overall performance distribution. These insights provide educators with a better understanding of class performance and help identify areas where students may require additional support.

Question-wise analysis further highlighted patterns in student responses, allowing identification of frequently missed concepts or misunderstood topics. Such analysis can assist in improving teaching strategies and question design [7].

### D. Discussion

Although the system demonstrates strong performance, certain limitations were observed. The keyword-based approach may not fully capture the semantic depth of highly descriptive or creative answers [4]. Variations in phrasing that do not include predefined keywords may result in slightly lower scores despite correct understanding.

However, the integration of preprocessing techniques helps reduce this limitation by normalizing textual variations [6]. The system achieves a balance between simplicity and effectiveness, making it suitable for practical deployment in academic environments.

Overall, the results indicate that the proposed system provides a reliable, fast, and consistent alternative to manual evaluation. It enhances efficiency while maintaining acceptable accuracy, thereby supporting educators in managing largescale assessments more effectively [1].

## VIII. CONCLUSION AND FUTURE WORK

### A. Conclusion

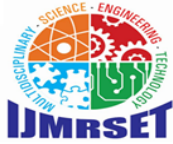
This paper presented an Automated Handwritten Answer Checker designed to simplify and enhance the evaluation of descriptive answers in academic settings. The system utilizes a structured keyword-based approach combined with text preprocessing techniques to assess student responses in a consistent and efficient manner [1], [6]. By automating the grading process, the system reduces the time and effort required for manual evaluation while maintaining a fair and transparent scoring mechanism.

The implementation demonstrates that the system is capable of processing multiple answer sheets, identifying relevant content, and assigning marks proportionally based on predefined criteria [4]. The inclusion of partial scoring ensures that students receive appropriate credit for incomplete yet relevant answers. Additionally, the system provides useful statistical insights, enabling educators to analyze overall performance and identify learning gaps.

Overall, the proposed solution offers a practical and scalable alternative to traditional evaluation methods. It improves consistency, minimizes human bias, and supports faster result generation, making it suitable for modern educational environments [3].

### B. Future Work

Although the current system provides reliable performance, there are several opportunities for further enhancement. One major improvement would be the integration of advanced Natural Language Processing (NLP) techniques to better understand the semantic meaning of student answers [6]. This would allow the system to recognize synonyms, contextual variations, and more complex expressions beyond simple keyword matching.



## International Journal of Multidisciplinary Research in Science, Engineering and Technology (IJMRSET)

(A Monthly, Peer Reviewed, Refereed, Scholarly Indexed, Open Access Journal)

In addition, incorporating deep learning models could further improve evaluation accuracy, especially for long and complex descriptive answers [6]. Future versions of the system may also include support for real-time evaluation through webbased platforms, enabling remote and large-scale deployment.

Another potential enhancement is the integration of plagiarism detection mechanisms to ensure academic integrity [1]. Advanced analytics dashboards can also be developed to provide deeper insights into student performance trends over time.

Furthermore, expanding the system to support multiple languages and handwriting recognition capabilities would increase its applicability across diverse educational contexts. These improvements would transform the system into a more intelligent, adaptive, and comprehensive automated evaluation platform.

### REFERENCES

- [1] A. Kumar and M. P. S. Bhatia, "A survey on automated essay scoring systems," in Proc. Int. Conf. Intelligent Computing Techniques, 2014, pp. 501–506.
- [2] C. Y. Chou, C. Y. Chang, and C. H. Lin, "Automated essay scoring using machine learning techniques," Journal of Educational Computing Research, vol. 29, no. 3, pp. 361–381, 2003.
- [3] M. D. Shermis and J. Burstein, Handbook of Automated Essay Evaluation: Current Applications and New Directions. New York, NY, USA: Routledge, 2013.
- [4] M. Mohler and R. Mihalcea, "Text-to-text semantic similarity for automatic short answer grading," in Proc. European Chapter of the Association for Computational Linguistics, 2009, pp. 567–575.
- [5] R. E. Banchs and H. Li, "IRIS: A chat-oriented dialogue system based on the vector space model," in Proc. ACL System Demonstrations, 2012, pp. 37–42.
- [6] D. Jurafsky and J. H. Martin, Speech and Language Processing, 3rd ed. Stanford, CA, USA: Stanford University, 2023.
- [7] K. VanLehn, "The relative effectiveness of human tutoring, intelligent tutoring systems, and other tutoring systems," Educational Psychologist, vol. 46, no. 4, pp. 197–221, 2011.



INTERNATIONAL  
STANDARD  
SERIAL  
NUMBER  
INDIA



# INTERNATIONAL JOURNAL OF MULTIDISCIPLINARY RESEARCH IN SCIENCE, ENGINEERING AND TECHNOLOGY

| Mobile No: +91-6381907438 | Whatsapp: +91-6381907438 | [ijmrset@gmail.com](mailto:ijmrset@gmail.com) |

[www.ijmrset.com](http://www.ijmrset.com)